

Diagnostic Imaging

Product Line





Diagnostic Imaging Products



CT scanner



MRI scanners



X-ray



X-ray



Diagnostic Imaging Products

Magnetic Resonance Imaging (MRI) Scanners

MRI Scanners use a non invasive method used to render images of the inside of an object. It is primarily used to demonstrate alterations of living tissues.



Computed Tomography (CT) Scanner

CT Scanners generate a three dimensional image of the internal organs of the body from a large series of two-dimensional x-ray images taken around a single axis of rotation.



Positron Emission Tomography (PET) Scanners

PET Scanners are used to produces a three-dimensional image or map of functional processes in the body employing a nuclear medicine medical imaging technique.



Magnetic Resonance Imaging (MRI)

MRI scanners, as well as all other diagnostic imaging products are multi-sourced i.e. we deal in all brands and products from all the manufacturers, based on the customer need.





Computed Tomography (CT Scanner)

A typical CT scanner, as well as a view of crating and packing facilities. We can supply conventional, spiral and multi-slice CT scanners.





Radiology

A typical radiology product. Very popular with the customers, as it offers digital fluoroscopy, which translates to reduced radiation dose to the patients.





Recommended Products

The two very popular systems that would suit any project.

- **Siemens Magnetom Symphony 1.5Tesla Short Bore MRI.**
- **Philips Gyroscan Intera 1.5Tesla Ultra Compact MRI.**

These systems can be supplied either as fixed MRI units or mobile MRI units.

These products are in excellent working condition and have been under the manufacturer's service contract. After the confirmation of order these products are fully assessed and refurbished with parts and other components replaced with new, as necessary.



Product Description

Siemens Magnetom Symphony 1.5 Tesla Short Bore MRI

The Symphony 1.5Tesla is a new generation, high-field, actively shielded MRI system, with reduced cryogen consumption.

This system is a Syngo platform and has dual operator's consoles. The main console is MRC-PC with Fujitsu Siemens Primergy 470 computer, 2X34GB Hard Disk and the secondary console is MRSC-PC Fujitsu Siemens Primergy 470 with two Hard Disks. The imager computer is a twin tower Fujitsu Siemens Celsius 460+ with four (4) Hard Disks and two 18in flat screens. Ultra Gradients with 20mT/m Booster and active shielding along with Dynamic MAP Shim and Active Shielding are incorporated. The RF system is digital. The Integrated Body coil with 8-channel Panoramic Grid option is included.





Product Description

cont'd

- **Coils**

- CP Head Array
- CP Body Array
- CP Spine Array
- CP Breast Array
- CP Shoulder Array
- CP Neck Array
- CP Peripheral Vascular
- CP Extremity
- CP Large Flexible
- CP Small Flexible
- CP ATM



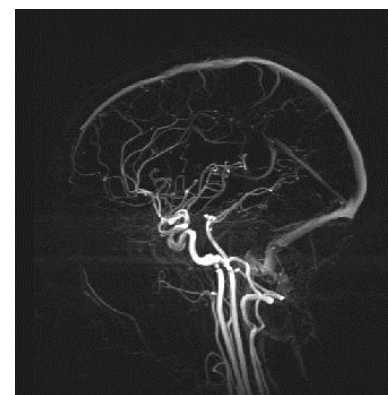


Product Description

cont'd

The Software level is 2002B with the following options:

- Advanced Angio
- Advanced Turbo
- Bold Imaging
- Care Bolus
- EPI, Perfusion, Diffusion
- MRI CV Main
- MRI Argus Flow Analysis
- Clinical Imaging Package
- Conventional SE and IR
- Gradient Echo
- 2D/3D Flash
- CORE
- Fat Sat
- MPR
- MIP
- Turbo SE
- Haste
- Turbo Flash
- Turbo Inversion
- 3D Turbo Spin Echo
- Turbo Whole Body
- Head/Neck vascular
- Peripheral Vascular





Product Description

cont'd

Philips Intera 1.5Tesla Ultra Compact MRI

The Philips Gyroscan Intera is a new generation, high field, actively shielded MRI system, with reduced cryogen consumption.

This system incorporates a new generation ultra compact actively shielded magnet, with reduced cryogen consumption. It features the wide open flared enclosures, for which Philips has received great praise.





Product Description

cont'd

Coils

- Synergy Multiconnect
- Synergy Head and Neck
- Synergy Spine
- Synergy Breast
- Sense Body
- Sense Flex M
- Quadrature Head
- Quadrature Body
- Flexible Circular Surface C1 and C3
- Foot/Knee Chimney



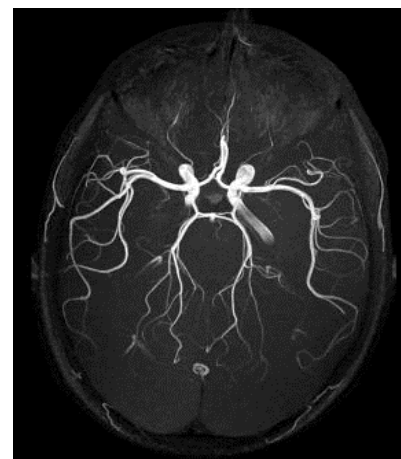
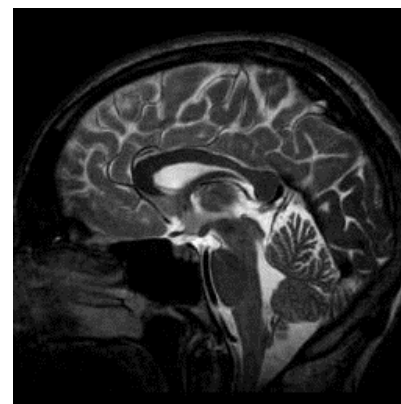


Product Description

cont'd

The software level is 9 with the following options:

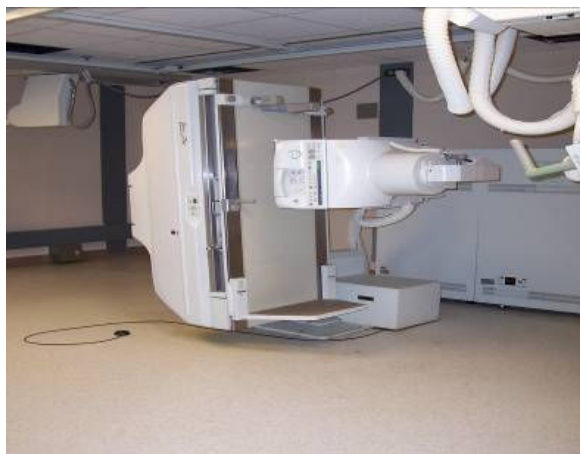
- Scan Tools
- Neurology Package
- Orthopedic package
- Body Package
- Breast Package
- Angio Package
- Artifact reduction Package
- Parallel Imaging Package for SENSE coils
- Single Shot Diffusion Imaging Including
ADC Calculation ECG Triggering and Gating





Diagnostic Imaging Products

- Gamma Cameras
- X-ray
- Ultrasound,
- Radiotherapy Equipment.

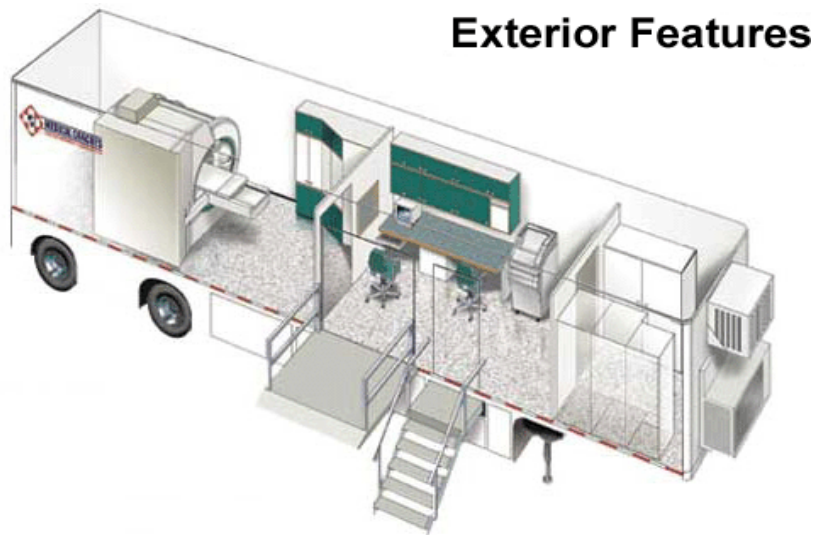




Product Range

Mobile Products

We supply integrated and other complex and sensitive pieces of medical equipment into a mobile platforms:



Exterior Features

- P.E.T. scanners
- M.R.I. scanners
- C.T. scanners
- Lithotripsy units
- Dental Clinics
- Medical Units
- Blood Collection Units
- Cardiac Catheterization Lab Units
- Medical Waste Processing Units